

HCMC Guest Wireless XP Users

1. Use your Network Connection Utility to scan and connect to “Hennepin Co Med Ctr. Guest Access”.
(Windows Zero Config shown)



2. Open a Web browser with JavaScript enabled (If you have no idea what JavaScript is, you’re probably OK)

3. Accept HCMC’s Web Certificate by clicking “Yes”.



4. Read and accept the “Wireless Internet Access Notice”.



Wireless Internet Access Notice

The Hennepin County Medical Center wireless service is provided as is, as available, and with all faults without warranties of any kind, either expresses or implied, including without limitation, noninfringement, merchantability, or fitness for a particular purpose. The wireless service is not guaranteed to be error free, uninterrupted, secure or always available or available with sufficient capacity.

Hennepin County Medical Center **does not** provide any support for wireless service connectivity issues.

Hennepin County Medical Center is not responsible for the services or products offered by third parties on the Internet, nor is Hennepin County Medical Center responsible for any information on the Internet that is provided by others.

Unacceptable usage of Hennepin County Medical Center's wireless service include but are not limited to:

- Interfering with or disrupting other Hennepin County Medical Center computing services, equipment and/or users.
- Violating any statutes, laws, and/or regulations.
- Malicious, threatening, harassing, obscene, and/or solicitous behavior.

Hennepin County Medical Center makes no commitment to review, monitor and/or filter any service, product information, programs, data, or content sent, accessed, offered or advertised over the Internet or otherwise made available to customers by any individual, information provider, or on-line service or content provider. In the course of investigations, routine system maintenance, and/or troubleshooting/repair, the activities of users may be logged, monitored, and/or audited.

Unauthorized or improper use of this wireless service may result in administrative disciplinary action, civil and/or criminal penalties.

By using Hennepin County Medical Center's wireless service you indicate your awareness and express consent to the terms and conditions of use. If you do not agree and/or can not meet the requirements of the conditions stated above click the 'I Disagree' button; otherwise click the 'I Agree' button below.

I Agree

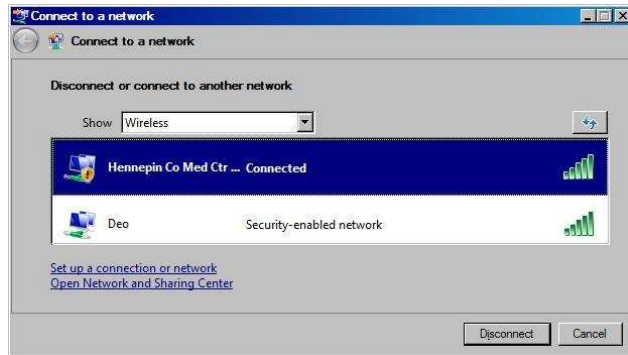
I Disagree

5. You now have access **ONLY** to Internet services.

NOTE: Wireless Guest Access without VPN will **NOT** provide access to any internal HCMC services (EPIC, TraceMaster Vue, PeopleSoft, etc.). Please continue to follow the standard IT work request form found on the HCMC Intranet for HCMC VPN access

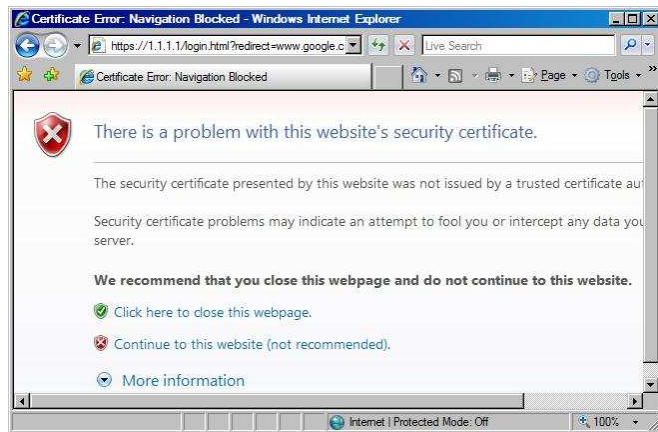
HCMC Guest Wireless Vista Users

1. Use your Network Connection Utility to scan and connect to “Hennepin Co Med Ctr. Guest Access”.
(Windows WLAN AutoConfig shown)



2. Open a Web browser with JavaScript enabled (If you have no idea what JavaScript is, you’re probably OK)

3. Accept HCMC’s Web Certificate by clicking “Continue to this web site (not recommended)”.



4. Read and accept the “Wireless Internet Access Notice”.



Wireless Internet Access Notice

The Hennepin County Medical Center wireless service is provided as is, as available, and with all faults without warranties of any kind, either expressed or implied, including without limitation, noninfringement, merchantability, or fitness for a particular purpose. The wireless service is not guaranteed to be error free, uninterrupted, secure or always available or available with sufficient capacity.

Hennepin County Medical Center **does not** provide any support for wireless service connectivity issues.

Hennepin County Medical Center is not responsible for the services or products offered by third parties on the Internet, nor is Hennepin County Medical Center responsible for any information on the Internet that is provided by others.

Unacceptable usage of Hennepin County Medical Center’s wireless service include but are not limited to:

- Interfering with or disrupting other Hennepin County Medical Center computing services, equipment and/or users.
- Violating any statutes, laws, and/or regulations.
- Malicious, threatening, harassing, obscene, and/or solicitous behavior.

Hennepin County Medical Center makes no commitment to review, monitor and/or filter any service, product, information, programs, data, or content sent, accessed, offered or advertised over the Internet or otherwise made available to customers by any individual, information provider, or on-line service or content provider. In the course of investigations, routine system maintenance, and/or troubleshooting/repair, the activities of users may be logged, monitored, and/or audited.

Unauthorized or improper use of this wireless service may result in administrative disciplinary action, civil and/or criminal penalties.

By using Hennepin County Medical Center’s wireless service you indicate your awareness and express consent to the terms and conditions of use. If you do not agree and/or can not meet the requirements of the conditions stated above click the 'I Disagree' button; otherwise click the 'I Agree' button below.

I Agree

I Disagree

5. You now have access **ONLY** to Internet services.

NOTE: Wireless Guest Access without VPN will **NOT** provide access to any internal HCMC services (EPIC, TraceMaster Vue, PeopleSoft, etc.). Please continue to follow the standard IT work request form found on the HCMC Intranet for HCMC VPN access.